

MAELEZO KWA JUMLA

Isacop 50WP ni dawa ya unga unga ya kuzuia magonjwa ya kahawa kama 'Coffee Berry Disease (CBD)' kutu (Leaf rust), na magonjwa ya kuvu kwenye viazi, nyanya, maharagwe, kabeji na 'carnations'. Isacop 50WP inaweza kuchanganywa na TWIGATHALONIL 720 SC ya kuzuia Coffee Berry Disease) kwa kahawa.

MAPENDEKEZO YA MATUMIZI

Mmea	Magonjwa	Vipimo		Muda wa kufuatiza	PHI
		Kilo /Ha	Gm/20lt		
Kahawa	Coffee Berry Disease (CBD)	Kilo 7.7	Gramu 140	Wiki 4	0
	Coffee Berry Disease (CBD) (Tank Mix) with Twigathalonil	Kilo 5.5 Isacop + 2.0 Lt Twigathalonil	Gramu 110 + Mililita 40	Wiki 4	14
	Coffee Leaf Rust (CLR)	Kilo 3.8	Gramu 70	Wiki 3	0
Viazi	Early & late blight	Kilo 3	Gramu 50-60	Siku7-10	3
Nyanya	Early & late blight	Kilo 2-3	Gramu 50-60	Siku7-10	3
'Cucumber'	'Anthracnose', 'rust',	Kilo 2-3	Gramu 50-60	Siku7-10	3
Kabeji	'Bacterial blights'	Kilo 2-3	Gramu 50-60	Siku7-10	3
Carnations	'Anthracnose', 'rust' & 'leaf spot'	Kilo 2-3	Gramu 50-60	Siku7-10	0

Muda wa kungoja kabla ya kurudi mahali palipo nyunyiziwa dawa - Masaa kumi na mbili au wakati dawa iliyonyunyiziwa imekauka.

MUDA WA KUNGOJA KABLA KUVUNA: Siku 14 kwenye kahawa.

Wakati wa kunyunyizia

Kama dawa ya kuzuia magonjwa, anza kunyunyizia kabla ya msimu wa mvua kuanza na uendelee wakati wa mvua ukifuata mapendekezo kulingana na vile ugonjwa ulivyo na hali ya mvua.

Jinsi ya kutayarisha dawa

Changanya Kiasi kinachohitajika cha ISACOP 50WP ukitumia thuluthi moja (1/3) ya maji inayohitajika kutumiwa. Changanya vizuri kisha uongeze kiasi cha maji kilichosalia ukiwa unatingisha. Hata wakati wa kunyunyizia ni muhimu kuendelea kutingisha bomba. **'Tank Mix':** Jaza nusu ya mtungi ya kunyunyizia na maji masafi, ongeza kiwango kinachohitajika cha ISACOP 50WP na ukoroge. Ongeza kiwango kinachohitajika ya TWIGATHALONIL 720SC na ukoroge kisha ongeza maji tena.

ISACOP imeundwa kwa njia inayojigandamisha yenyewe kwenye matawi kwa hiyo hakuna haja ya kuongeza mchanganyiko wa kusaidia kugandamisha. Tumia mchanganyiko siku hiyo ulioitayarisha.

TAHADHARI

Dawa hii inadhuru binadamu ikimezwa. Huwasha macho.

Utumiaji:- Vaa nguo za kinga, yaani 'overall', vizuizi vya vidole, viatu, kofia na kizuizi cha uso wakati unapo tayarisha dawa na unaponyunyizia dawa. Jiepushe na kuvuta dawa. Jihadhari usiguze ngozi, macho au nguo. Wakati wote unaponyunyizia, epuka ukungu wa dawa. Usivute sigara, usinyewe wala kula unapotumia dawa hii.

Baada ya kazi:- Badilisha nguo ulizotumia kisha unawe uso na mikono vizuri. Osha bomba na nguo za kazi kwa uangalifu.

KUHIFADHI

ISACOP sharti ihifadhiwe kwenye chombo chake hasili kilichoziwa vizuri pahala palipokauka, pasipo na joto na penye hewa ya kutosha. Ifungie ukitumia kufuli mbali na vyakula, vinywaji, chakula cha mifugo na vifurushi vinavyotumika kufunga vyakula na vinywaji. Ghala iwe marufuku kwa watoto na wasioidhinishwa.

KUTUPA

Dawa ya ziada kama haikutumika itupwe kwenye jaa lililoidhinishwa la kutupa madawa ya sumu ya kuangamiza magonjwa na wadudu waharibifu mahali salama mbali na vyanzo vya maji kulingana na sheria na kanuni za nchi. Usitumie chombo kilichokwisha dawa kwa matumizi mengine yoyote. Vyombo vilivyokwisha dawa vyapaswa kutupwa kwenye jaa la kutupa takataka za sumu, lililoidhinishwa pahali salama mbali na vyanzo vya maji.

KUKINGA WANYAMA NA MAZINGARA

ISACOP hudhuru samaki na viumbe vya majini. Inadhuru mifugo. Mifugo wasilishwe pahali dawa imenyunyizwa. Usichafue visima au mito kwa kunyunyizia, kuosha vyombo, kumwaga mabaki, au kutupa viwekeo vya dawa hii.

MAELEZO YA HUDUMA YA KWANZA

Ikgiza macho:- Sunza macho mara moja ukitumia maji safi kwa muda usiopungua dakika kumi na tano kisha **MPELEKE MJEHURIWA KWA DAKTARI.**

Ikgiza ngozi :- Vaa nguo zilizopatawa na dawa mara moja kisha uoge vizuri kwa maji safi na sabuni.

Itimezwa:- Mpe mgonjwa aliyeimeza maji ya chumvi kijiko kimoja kwa glasi ya maji kisha umtapishe kwa kuingiza kidole kwenye koo lake pole pole. Usimtapishe wala kumlisha chochote ikiwa mgonjwa amepoteza fahamu. Mwone daktari.

Ikipumuliwa:- Kiasi cha juu chaweza kuleta hali ya 'metallic fever' hali ambayo kwa kawaida huisha yenyewe. Mpeleke mjeruhi kwa Daktari

ARIFA KWA DAKTARI:

Ikiwa mgonjwa hajatajika, mwoshe tumbo ukitumia makaa (Medicinal charcoal) au mchanganyiko wa asilimia moja ya "Potassium Ferrocyanide" na maji. Tibu kulingana na vile anavyojisikia

Wakati wa dharura piga simu bila malipo : 0800720021 na 0800730030 (masaa 24)

ILANI KWA MTUMIAJI

Dawa hii ni sharti itumiwe kulingana na maagizo yaliyo kwenye kibandiko. Ni hatia chini ya sheria za madawa ya kuangamiza wadudu waharibifu kutumia au kuhifadhi dawa hii katika hali isiyofaa.

THIBITISHO

Dhamana ya muuzaji ni maelezo yaliyo kwenye kibandiko ambayo ni lazima yafuatwe kikamilifu. Mnuuzi lazima akubali hatari zozote zinazoweza kutokana na matumizi ya dawa hii kwa binadamu au mali na lazima aikubali dawa hii katika hali iliyoye.

READ THE LABEL BEFORE USING (SOMA KIBANDIKO KABLA YA KUTUMIA)

ISACOP® 50 WP

WETTABLE POWDER FUNGICIDE

Isacop 50WP is a green wettable powder fungicide, for the control of coffee berry disease (CBD) & rust on coffee. For use on tomatoes and potatoes against early and late blight, cucumber & cabbages against anthracnose, bacterial blights and on carnations against rust, leaf spot and anthracnose. Isacop 50WP can also be used in tank mix with TWIGATHALONIL 720SC for control of Coffee Berry Disease in Coffee.

Kiua kuvu ya kuzuia magonjwa ya kahawa kama 'Coffee Berry Disease (CBD)' kutu (Leaf rust), na magonjwa ya kuvu kwenye viazi, nyanya, maharagwe, kabeji na 'carnations'. Isacop 50WP inaweza kuchanganywa na TWIGATHALONIL 720 SC na kutumika kuzuia Coffee Berry Disease) kwa kahawa.

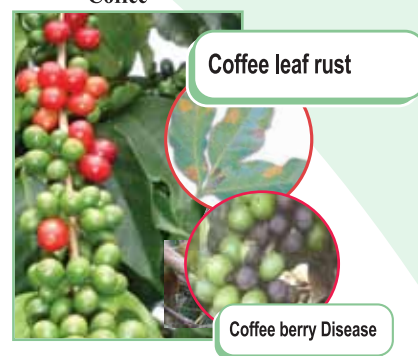
COMMERCIAL & AGRICULTURAL CLASS (KUNDI LA KILIMO NA BIASHARA)

REGISTRATION NO.: PCPB (CR) 0295 (NAMBARI YA KUSAJILIWA):

GUARANTEE : Copper Oxchloride 85% (DHAMANA) (Equiv. to 50% w/w Metallic Copper)

KEEP LOCKED AND OUT OF REACH OF CHILDREN, FOOD, DRINKS AND LIVESTOCK FEEDSTUFF (WEKA MBALI NA WATOTO, CHAKULA, VINYWAJI NA VYAKULA VYA MIFUGO)

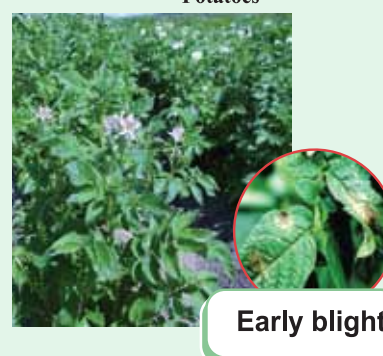
Coffee



Tomatoes



Potatoes



SHELF LIFE: 2 years from date of manufacture in original, unopened container stored in a cool dry well ventilated place.
MAISHA RAFUNI: Miaka miwili baada ya tarehe ya kutengenezwa ikihifadhiwa kwenye mtungi wake halisi usiofunguliwa na uliowekwa pahali pakavu na baridi

In case of an emergency, call Toll free Nos: (Wakati wa dharura piga simu bila malipo) 0800720021 and 0800730030 (24hrs / masaa 24)



Net Weight / Uzito kamili: 25kg /Kilo 25

DISTRIBUTOR (MSAMBAZAJI) IN KENYA
TWIGA CHEMICAL INDUSTRIES LTD.
P O BOX 30172-00100 G.P.O
NAIROBI-KENYA
TEL: +254(020)-3942000/3942300
Fax: 3942405

MANUFACTURER (MTENGENEZAJI):



Centro Uffici San Siro (i.o. Centro Uffici Siro) Via Caldera 21 – 20153 Milano – Italy



GENERAL INFORMATION

Isacop 50WP is a green wettable powder fungicide, for the control of coffee berry disease (CBD) & rust on coffee. For use on tomatoes and potatoes against blight, cucumber & cabbages against anthracnose, bacterial blights and on carnations against rust, leaf spot and anthracnose. Isacop 50WP can also be used in tank mix with TWIGATHALONIL 720SC for control of Boffee Berry Disease in Coffee.

MODE OF ACTION: It's a foliar fungicide with contact and preventive properties. The product is absorbed by fungal and bacterial spores during growth. This process disrupts the enzyme systems of the pathogenic organisms causing their death. For effective control, isacop deposits must be on the crop before fungal spores begin to germinate.

RECOMMENDATIONS FOR USE

Crop	Disease	Kg/Ha in 1000L of water	Gm/20lt	Spray Interval	PHI
Coffee	Coffee Berry Disease (CBD)	7.7kg	140	4 weeks	0
	Coffee Berry Disease (CBD) (Tank Mix) with Twigathalonil	5.5 kg Isacop + 2.0 Lt Twigathalonil	110gm + 40ml	4 weeks	14
	Coffee Leaf Rust (CLR)	3.8kg	70gm	3 weeks	0
Potatoes	Early & late blight	3kg	50gm-60gm	7-10 days	3
Tomatoes	Early & late blight	2kg-3kg	50gm-60gm	7-10 days	3
Cucumber	Anthracnose,rust	2kg-3kg	50gm-60gm	7-10 days	3
Cabbages	Bacterial blights	2kg-3kg	50gm-60gm	7-10 days	3
Carnations	Anthracnose, rust & leaf spot	2kg-3kg	50gm-60gm	7-10 days	0

Re-Entry Period : 12 hrs or after spray has dried on the leaves.

Pre-harvest Interval: 14 days for Coffee

Timing of application

As a preventative fungicide, start spraying before the rains and continue during the rainy season in spray intervals recommended above depending upon the disease severity and rainfall condition.

Preparation of the spray

Mix the required quantity of ISACOP 50WP in one third (1/3) of the necessary amount of water while constantly agitating. Mix into a slurry and top up with the remaining amount of water, while constantly agitating. Even while spraying constant agitation is necessary. Spray to give an even coverage. ISACOP 50WP has inherent sticking ability on leaves. Use the spray on the same day of its preparation.

Tank Mix: Half fill the spray tank with clean water, add the necessary quantity of ISACOP 50WP and stir well. Add the recommended quantities of TWIGATHALONIL 720SC and stir well. Top up with water to the required spray volume.

HAZARDS /PRECAUTIONS

This product is harmful to human beings if swallowed. It is irritating to the eyes.

Handling

Wear protective clothing, namely, overalls, gloves, gum boots, hat/head dress or dust mask when preparing the spray mixture and face shield while spraying. Avoid breathing in dust. Avoid contact with skin, eyes and clothing. Do not apply upwind and stay out of the spray mist. Do not smoke, drink or eat while handling the product.

After work Change clothes and thoroughly wash hands and face. Carefully wash the spraying equipment and working clothes.

STORAGE:

ISACOP must be kept in its original, sealed container in a cool, dry and well ventilated place under lock and key away from food stuffs, beverages, animal feed and packaging materials used for these commodities. Store out of reach of children and unauthorized people.

DISPOSAL: Surplus product, if unused should be disposed off according to national regulations on chemical disposal on a landfill site approved for pesticides in a safe place away from water sources in accordance with national legislation and regulations. Do not use empty container for any other purpose. Empty containers are to be triple rinsed, flattened, perforated and disposed off on a landfill site in a safe place away from water sources in accordance with national regulations on chemical disposal.

ENVIRONMENTAL HAZARD

ISACOP is harmful to fish and aquatic life. It is hazardous to domestic animals. Livestock should not be allowed to feed on newly sprayed herbage. Do not contaminate ponds or waterways by direct application, cleaning of equipment, disposal of waste and empty paper pack.

FIRST AID INSTRUCTIONS

Eye contact:- Rinse immediately with gently running clean water for about 15 minutes, maintaining the eyelids open and consult an Ophthalmologist or a Physician.

Skin contact:- Remove the contaminated clothes immediately and wash thoroughly with plenty of clean water and soap.

Ingestion:- If swallowed give victim one teaspoonful of common salt in a glass of water and induce vomiting by touching back of the throat with finger or blunt object. Do not induce vomiting or give anything by mouth to an unconscious person. Get medical attention.

Inhalation:- Excessive quantities may cause 'metallic fever', which is an unspecified allergic reaction without a lasting effect.

Notes to physician:

If swallowed and the patient has not vomited, undertake gastric lavage with medical charcoal or administration of 1% Potassium ferrocyanide solution. Administer BAL treatment only in severe cases of absorption poisoning.

Antidote: Treat symptomatically.

In case of an emergency, call Toll free Nos: 0800720021 and 0800730030 (24hrs)

NOTICE TO USER

This pest control product is to be used only in accordance with the directions on this label. It is an offence under the Pest Control Products Act to use or store a pest control product under unsafe conditions.

WARRANTY

Seller's guarantee is limited to the terms set out on the label and subject thereto, the buyer assumes the risk to persons or property arising from the use or handling of this product and accepts the product on that condition.